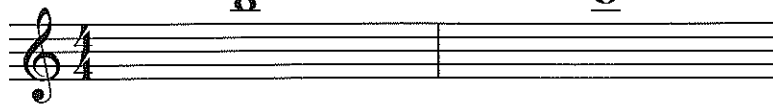


Step 13

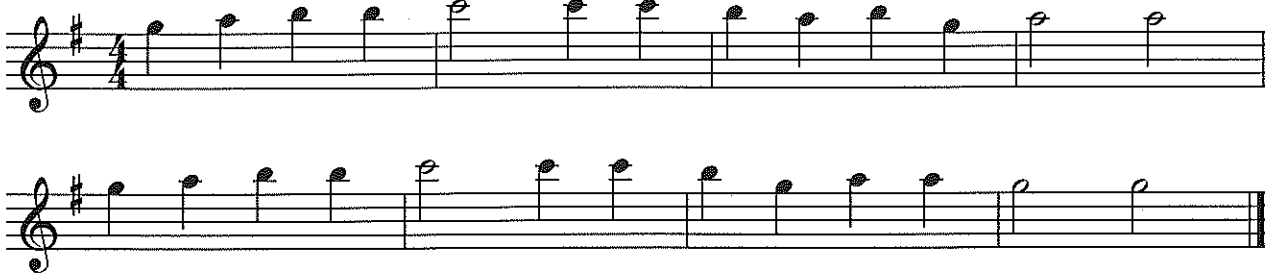
B



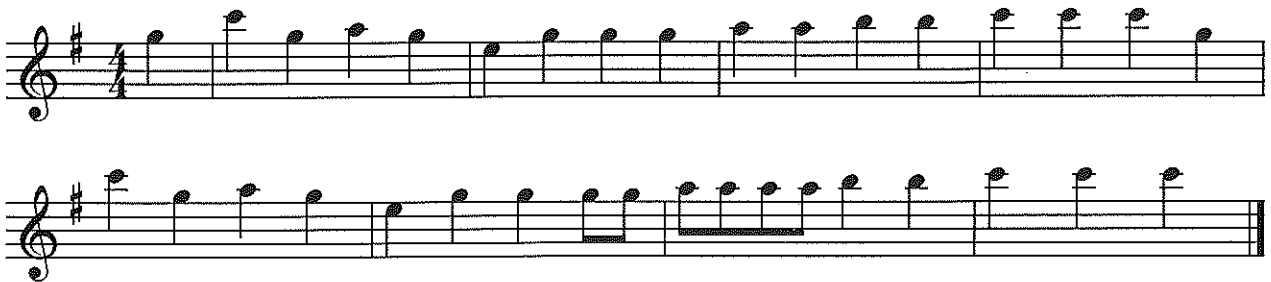
C



Mattachins



A Sailor Went to Sea



The Can Can



William Tell Overture

Allegro Rossini

f *sim.*

Fine *mf*

D.C. al Fine

D.C. (Da Capo) al Fine means go back to the beginning and play until the *Fine*. *Fine* means end.

Hungarian Dance

Allegro L.M.L.

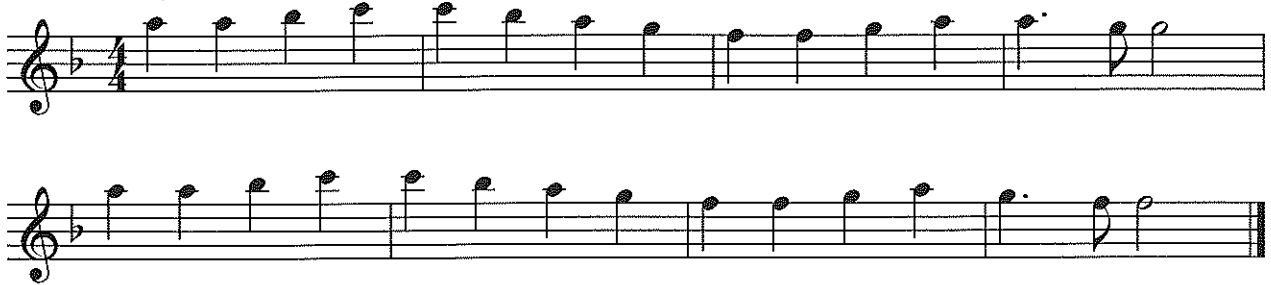
mf *mp* *f* *p* *f*

Step 14

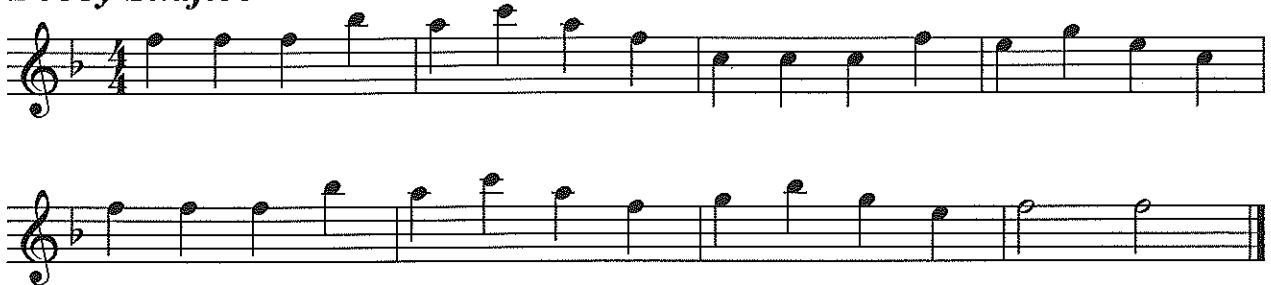
Bb



Ode to Joy



Bobby Shaftoe



Red River Valley



La Cucaracha

Rumba Traditional

mp

mf

Turkey in the Straw

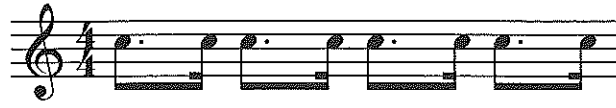
Allegro American Tune

f

mp

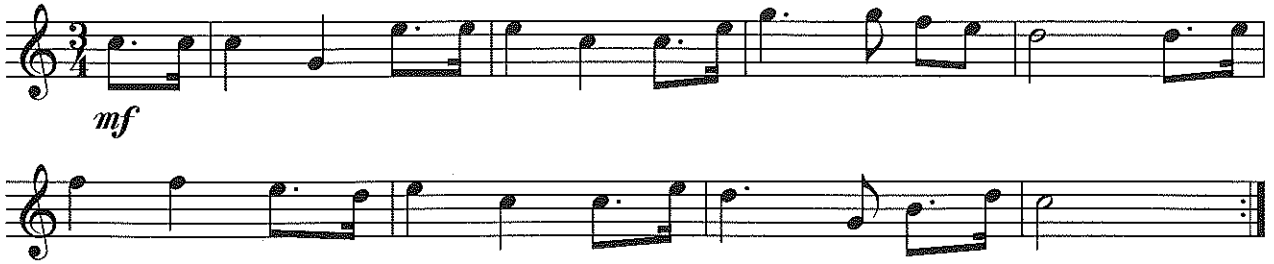
f

Step 15



Dotted quaver (3/4 beat) + Semiquaver (1/4 beat) = 1 crotchet beat

Clementine



John Brown's Body



Alouette



The Ash Grove

Musical score for 'The Ash Grove' in 3/4 time, key of B-flat major. The piece consists of three staves of music. The first staff begins with a piano (*p*) dynamic. The second staff features a repeat sign and ends with a *Fine* marking and a mezzo-forte (*mf*) dynamic. The third staff concludes with a *D.C. al Fine* instruction.

Short'nin' Bread

Musical score for 'Short'nin' Bread' in 4/4 time, key of B-flat major. The piece consists of four staves of music. The first staff starts with a mezzo-forte (*mf*) dynamic. The second staff continues the melody. The third staff begins with a forte (*f*) dynamic. The fourth staff concludes with a piano (*p*) dynamic followed by a forte (*f*) dynamic.

Skye Boat Song

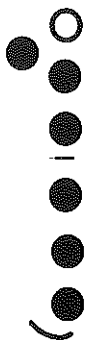
Musical score for 'Skye Boat Song' in 3/4 time, key of B-flat major. The piece consists of four staves of music. The first staff begins with a mezzo-piano (*mp*) dynamic. The second staff features a repeat sign. The third and fourth staves continue the melody with a mezzo-piano (*mp*) dynamic.

Step 16

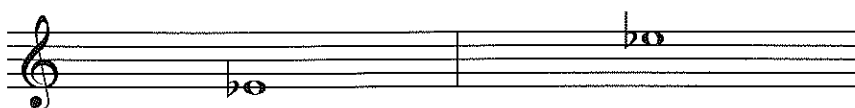
E_b



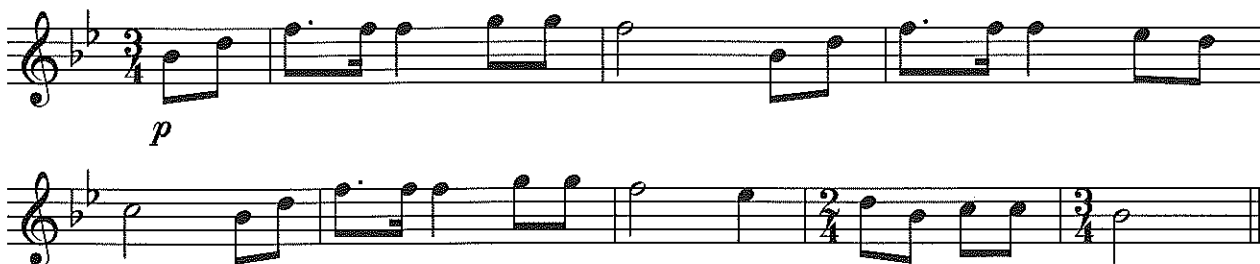
E_b



Triplet Quavers
(play 3 notes in the time of 2)



Kum Ba Yah



John Peel



Little Brown Jug



Three Rounds

Come Follow Me

John Hilton (17th century)

Musical notation for 'Come Follow Me' in 4/4 time, featuring three rounds. The first round starts with a *mf* dynamic. The melody consists of eighth and quarter notes, ending with a double bar line.

I Like the Flowers

Traditional

Musical notation for 'I Like the Flowers' in 2/4 time, featuring four rounds. The first round starts with a *mp* dynamic. The melody consists of quarter and eighth notes, ending with a double bar line.

Shalom

Trad. Hebrew

Musical notation for 'Shalom' in 4/4 time, featuring four rounds. The first round starts with a *mf* dynamic. The melody consists of quarter and eighth notes, ending with a double bar line.

Step 17

C#



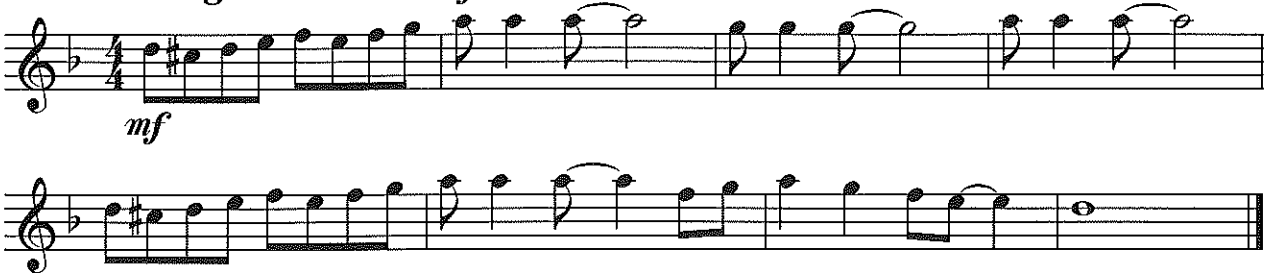
G#



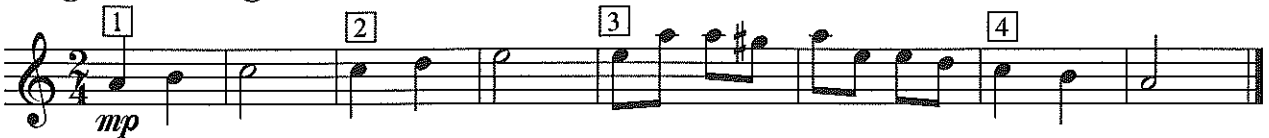
	= Pause (hold the note for longer)
<i>rall.</i>	= gradually slower
<i>accel.</i>	= gradually faster



Joshua Fought the Battle of Jericho



Sing This Song



March Slave

(Tchaikovsky)



Student Song

Con brio

Trad. German

Musical score for 'Student Song' in 3/4 time, key of D major. The score consists of three staves. The first staff begins with a treble clef, a key signature of two sharps (D major), and a 3/4 time signature. The tempo is 'Con brio'. The first measure is marked with a forte dynamic (*f*). The second staff continues the melody, marked with a mezzo-forte dynamic (*mf*). The third staff concludes the piece, marked with a fortissimo dynamic (*ff*) and a 'rall.' (rallentando) instruction. The piece ends with a double bar line.

Linstead Market

Lively

Caribbean

Musical score for 'Linstead Market' in 4/4 time, key of Bb major. The score consists of four staves. The first staff begins with a treble clef, a key signature of two flats (Bb major), and a 4/4 time signature. The tempo is 'Lively'. The first measure is marked with a mezzo-forte dynamic (*mf*). The second staff continues the melody. The third staff is marked with a mezzo-piano dynamic (*mp*). The fourth staff concludes the piece, marked with a forte dynamic (*f*). The piece ends with a double bar line.

Hava Nagila

Moderato

Trad. Jewish

Musical score for 'Hava Nagila' in 4/4 time, key of Bb major. The score consists of three staves. The first staff begins with a treble clef, a key signature of two flats (Bb major), and a 4/4 time signature. The tempo is 'Moderato'. The first measure is marked with a mezzo-forte dynamic (*mf*). The second staff continues the melody, marked with a 'cresc.' (crescendo) instruction. The third staff concludes the piece, marked with an 'accel. (2nd time)' instruction and a first ending (1) and second ending (2) structure. The piece ends with a double bar line.

Step 18

Count 6 quaver beats in a bar

A musical staff in 6/8 time showing four bars of music. Each bar contains six eighth notes. Below the staff, the numbers 1 through 6 are written under each note in each bar to indicate the count.

Rondo (from Horn Concerto No 4)

(Mozart)

Two staves of musical notation in 6/8 time. The first staff begins with a dynamic marking of *mf*. The music consists of eighth and sixteenth notes.

Irish Washerwoman

Two staves of musical notation in 6/8 time with a key signature of one sharp (F#). The first staff starts with a dynamic marking of *f* and includes a *sim.* (sostenuto) marking. The music features eighth and sixteenth notes.

For He's a Jolly Good Fellow

Three staves of musical notation in 6/8 time. The first staff contains a Segno symbol (⌘). The second staff begins with a dynamic marking of *f* and ends with the word *Fine*. The third staff begins with the instruction *D.S. al Fine*.

D.S. (*Dal Segno*) *al Fine* means go back to the sign ⌘ and play until *Fine*

My Hat it has Three Corners

Two staves of musical notation in 6/8 time with a key signature of one sharp (F#). The first staff begins with a dynamic marking of *mf*. The music consists of eighth and sixteenth notes.

Step 19

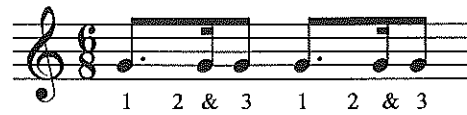
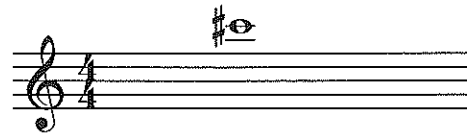
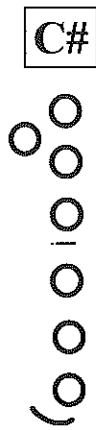
D

London's Burning

Frere Jacques

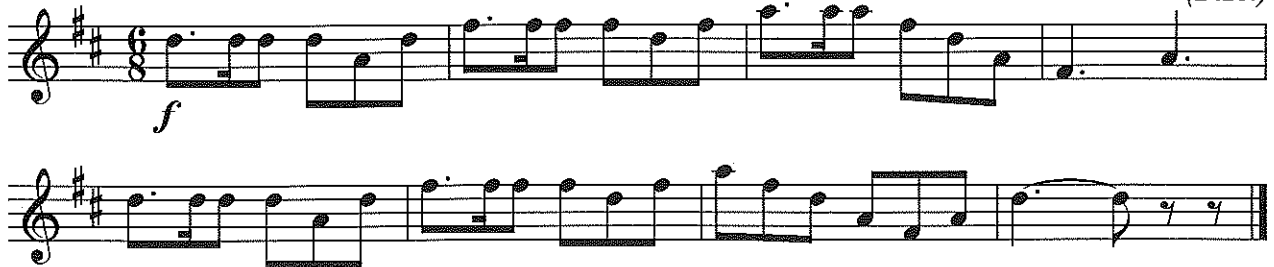
Riding on a Donkey

Step 20



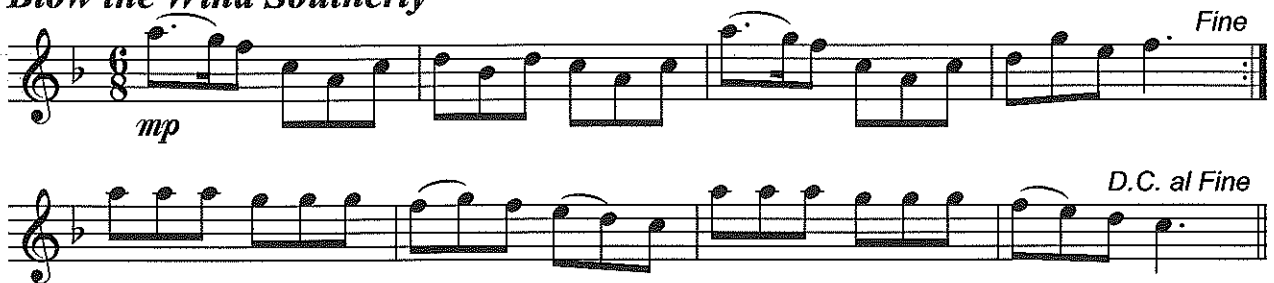
Trumpet Call (from Carmen)

(Bizet)



Blow the Wind Southerly

Fine



D.C. al Fine

Fanfare



Portsmouth

Allegro Traditional



mf *mp*

mf

f

The first system of the Portsmouth score consists of four staves of music in 4/4 time. The tempo is marked 'Allegro' and the piece is 'Traditional'. The first staff begins with a mezzo-forte (*mf*) dynamic and ends with a mezzo-piano (*mp*) dynamic. The second staff continues with a mezzo-forte (*mf*) dynamic. The third staff continues with a forte (*f*) dynamic. The fourth staff concludes the system with a forte (*f*) dynamic.

Country Gardens

Allegro Traditional



mf *mp*

mp

p *f*

The second system of the Country Gardens score consists of four staves of music in 4/4 time. The tempo is marked 'Allegro' and the piece is 'Traditional'. The first staff begins with a mezzo-forte (*mf*) dynamic and ends with a mezzo-piano (*mp*) dynamic. The second staff continues with a mezzo-piano (*mp*) dynamic. The third staff continues with a piano (*p*) dynamic and ends with a forte (*f*) dynamic. The fourth staff concludes the system with a forte (*f*) dynamic.